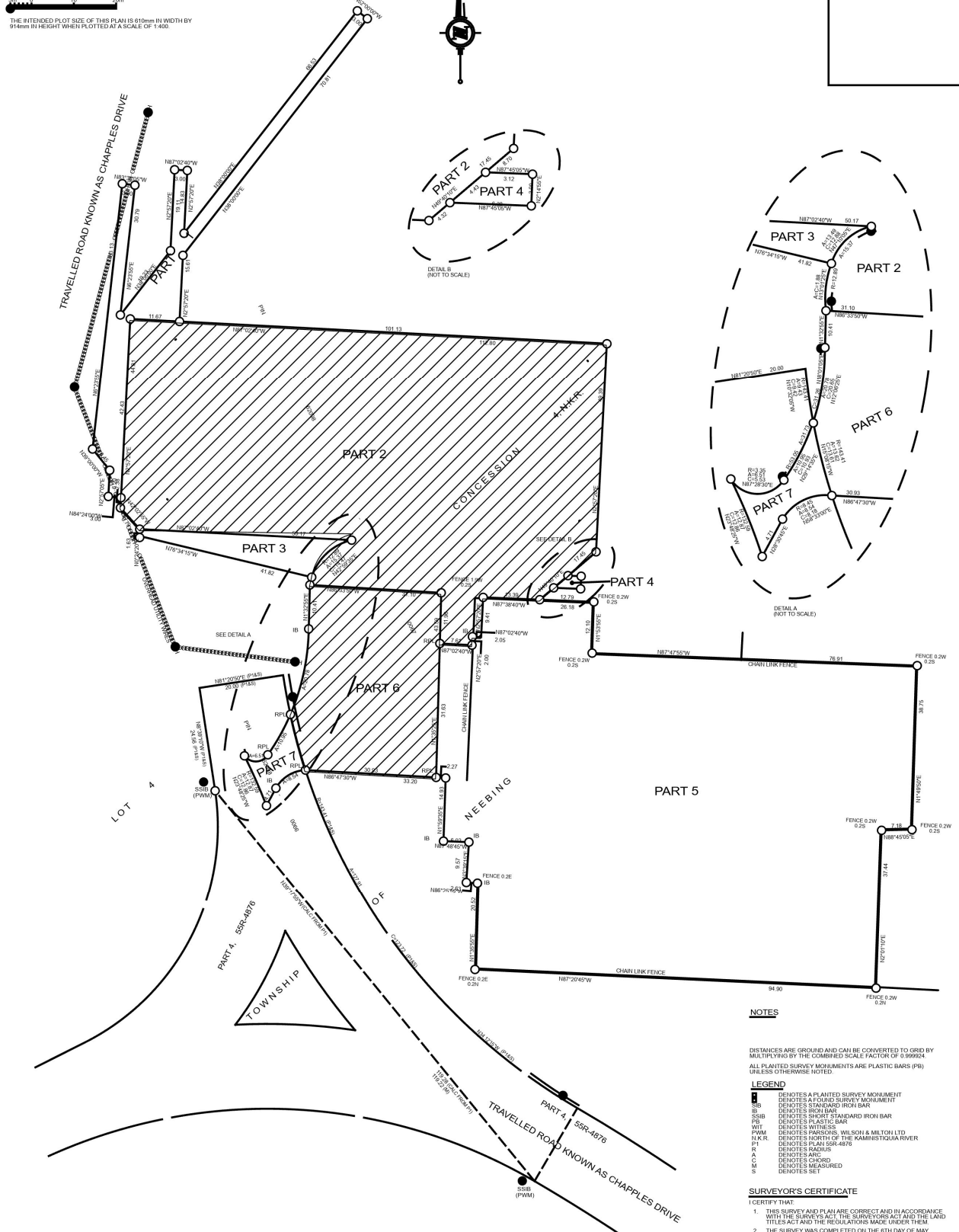


SCHEDULE "A" - INDOOR FACILITY LANDS

PLAN OF SURVEY OF
PART OF LOT 4
CONCESSION 4, N.K.R.
GEOGRAPHIC TOWNSHIP OF NEEBING
CITY OF THUNDER BAY
DISTRICT OF THUNDER BAY

SCALE - 1:400
THE INTENDED PLOT SIZE OF THIS PLAN IS 610mm IN WIDTH BY 914mm IN HEIGHT WHEN PLOTTED AT A SCALE OF 1:400.

PARTS SCHEDULE				
PART	LOT	CONCESSION	PIN	AREA
1				0.076 ha
2				0.636 ha
3				0.025 ha
4	PART OF LOT 4	4, N.K.R.	PART OF E2098-0067	14.4 m ²
5				0.833 ha
6				0.143 ha
7			PART OF E2098-0066	0.011 ha



Indoor Facility

COORDINATES BELOW ARE DERIVED FROM GPS OBSERVATIONS USING THE PRECISE POINT POSITIONING SERVICE AND ARE REFERENCED TO DATUM 2011, NAD83 (CSRS2011). COORDINATES COMPLY WITH URBAN ABSOLUTE ACCURACY PER SEC 4(1) OF O.R.G. 216/10.

POINT ID	NORTHING	EASTING
A	5,362,623.96	331,968.87
B	5,362,615.83	331,892.57
C	5,362,699.56	331,925.09

COORDINATES CANNOT, IN THEMSELVES, BE USED TO RE-ESTABLISH CORNERS OF BOUNDARIES SHOWN ON THIS PLAN.

ROTATIONS APPLIED TO PLAN BEARINGS FOR BEARING COMPANISONS

PLAN	ROTATION
P1	1°16'47" CLOCKWISE

NOTES

DISTANCES ARE GROUND AND CAN BE CONVERTED TO GRID BY MULTIPLYING BY THE COMBINED SCALE FACTOR OF 0.99994.

ALL PLANTED SURVEY MONUMENTS ARE PLASTIC BARS (PB) UNLESS OTHERWISE NOTED.

LEGEND

- PB DENOTES A PLANTED SURVEY MONUMENT
- IB DENOTES A FOUND SURVEY MONUMENT
- SB DENOTES STAIRS IRON BAR
- IB DENOTES IRON BAR
- SB DENOTES SHORT STANDARD IRON BAR
- PB DENOTES PLASTIC BAR
- WIT DENOTES WITNESS
- PWM DENOTES PNEUMATIC WILSON & MCELROY L.L.D.
- N.K.R. DENOTES NORTH OF THE KAMMISTIGUIA RIVER
- P1 DENOTES PLAN 558-4876
- R DENOTES RADIUS
- A DENOTES ARC
- C DENOTES CHORD
- M DENOTES MEASURED
- S DENOTES SET

SURVEYOR'S CERTIFICATE

I CERTIFY THAT:

- THIS SURVEY AND PLAN ARE CORRECT AND IN ACCORDANCE WITH THE SURVEY ACT, THE SURVEYORS ACT AND THE LAND TITLES ACT AND THE REGULATIONS MADE UNDER THEM.
- THE SURVEY WAS COMPLETED ON THE 6TH DAY OF MAY, 2021.

MAY 23 2021
DATE

PETER SH HAWAT
PETER SH HAWAT
ONTARIO LAND SURVEYOR

THIS PLAN OF SURVEY RELATES TO AOLS PLAN SUBMISSION FORM NUMBER 074876

TBT ENGINEERING CONSULTING GROUP

TBT SURVEYORS INC. - A WHOLLY OWNED SUBSIDIARY OF TBT ENGINEERING LIMITED

1919 VINCENY STREET, THUNDER BAY, ONTARIO L7Y 6T9
T: (807) 624-5160 F: (807) 624-5161 www.tbt.ca

DRAWN BY: PD CHECKED BY: PSH DATED

METRIC
DISTANCES AND COORDINATES SHOWN ON THIS PLAN ARE IN METRES AND CAN BE CONVERTED TO FEET BY DIVIDING BY 0.3048. AREAS SHOWN ON THIS PLAN ARE IN HECTARES AND CAN BE CONVERTED TO ACRES BY MULTIPLYING BY 2.471.