

Potential designated encampment sites survey

About this Document

This document accompanies the hard copy *Potential Designated Encampment Sites Survey*.

It provides a summary of each potential site and explains how the locations align with the City's Distance Guidelines and Guiding Criteria. The information is intended to help you understand the context as you complete the survey.

If you are completing the paper survey, you may refer to this document at any time while answering the questions.

Important to know

- The sites shown are potential locations only.
- No final decisions have been made.
- Your feedback will be summarized and shared with City Council to help inform next steps.

Thank you for taking the time to review the information and share your input.

What to Expect on the Next Pages

Each potential site is shown on its own page.

For every site, you will see:

- An aerial image with a red circle showing the general area where a designated encampment could be considered. The circle is approximate and does not represent the exact footprint indicated. In some cases, it may include features (such as roads) that would not be used.
- A QR code linking to Google Maps so you can explore the area in more detail.
- A short summary of how the site aligns with the City's Distance Guidelines and Guiding Criteria.

You can share comments on each site as you review them by writing your feedback in the spaces provided on the hard copy survey. After you have reviewed all sites, you will be asked to rank them from strongest to weakest overall based on your perspective.

If you have questions, please contact encampments@thunderbay.ca.

Share your thoughts on potential designated encampment sites

Get Involved Thunder Bay

Site A - Current River Park



- ✓ **Ability to Provide Basic Services** - Can provide and maintain basic services
- ✗ **Accessibility Considerations** - Does not reasonably support accessibility needs
- ⚠ **Compatibility with Current Use** - No regular programmed or permitted uses; can be rented for a fee but bookings are very rare
- ✓ **Distance Guidelines** - Meets all distance guidelines
- ✓ **Distance to Services** - Social services and public transit within 1.5km
- ✓ **Emergency and Service Access** - Good access due to flat terrain, roadways, and parking lot
- ✓ **Past Encampment Activity** - Presence of encampments over the years
- ✓ **Site Size** - More than one acre of usable space
- ✓ **Year-Round Operability** - Flat terrain and road access supports all-season operations

Share your thoughts on potential designated encampment sites

Get Involved Thunder Bay

Site B - Freedom Park



- ✓ **Ability to Provide Basic Services** - Can provide and maintain basic services
- ✓ **Accessibility Considerations** - Reasonably supports accessibility needs
- ✓ **Compatibility with Current Use** - No regular programming or permitted uses; cannot be booked for a fee
- ✓ **Distance Guidelines** - Meets all distance guidelines
- ✓ **Distance to Services** - Social services and public transit within 1.5km
- ✓ **Emergency and Service Access** - Good access due to flat terrain and roadways
- ✓ **Past Encampment Activity** - Presence of encampments over the years
- ✓ **Site Size** - More than one acre of usable space
- ✓ **Year-Round Operability** - Flat terrain and road access supports safe all-season operations

Share your thoughts on potential designated encampment sites

Get Involved Thunder Bay

Site C - Island Drive Park

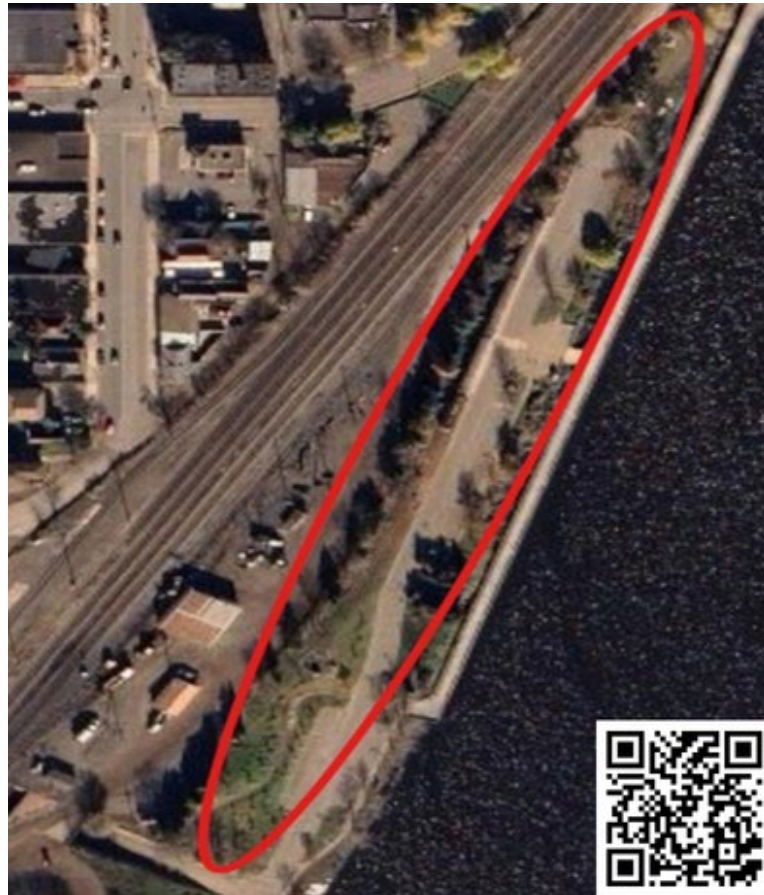


- ✓ **Ability to Provide Basic Services** - Can provide and maintain basic services
- ⚠ **Accessibility Considerations** - Limited support for accessibility needs
- ✓ **Compatibility with Current Use** - No regular programmed or permitted uses; cannot be booked for a fee
- ✓ **Distance Guidelines** - Meets all distance guidelines
- ⚠ **Distance to Services** - No social services but public transit within 1.5km
- ⚠ **Emergency and Service Access** - Uneven terrain and limited road/path access to entire site
- ⚠ **Past Encampment Activity** - Some encampment activity observed
- ✓ **Site Size** - More than one acre of usable space
- ⚠ **Year-Round Operability** - Uneven terrain and limited road/path access to entire site

Share your thoughts on potential designated encampment sites

Get Involved Thunder Bay

Site D - Kam River Heritage Park



- ✓ **Ability to Provide Basic Services** - Can provide and maintain basic services
- ✓ **Accessibility Considerations** - Reasonably supports accessibility considerations
- ✓ **Compatibility with Current Use** - No regular permitted or programmed uses; cannot be booked for a fee
- ✓ **Distance Guidelines** - Meets all distance guidelines
- ✓ **Distance to Services** - Social services and public transit within 1.5km
- ✓ **Emergency and Service Access** - Terrain and roadways support good access
- ✓ **Past Encampment Activity** - Presence of encampments over past years
- ✓ **Site Size** - More than one acre of usable space
- ✓ **Year-Round Operability** - Terrain and road access supports safe all-season operations

Share your thoughts on potential designated encampment sites

Get Involved Thunder Bay

Site E - McKellar & Vickers



✓ **Ability to Provide Basic Services** - Can provide and maintain basic services

✗ **Accessibility Considerations** - Does not reasonably support accessibility considerations

✓ **Compatibility with Current Use** - No regular programmed or permitted uses; cannot be booked for a fee

✓ **Distance Guidelines** - Meets all distance guidelines

⚠ **Distance to Services** - No social services but public transit within 1.5km

⚠ **Emergency and Service Access** - Uneven terrain and lack of roadways and paths

⚠ **Past Encampment Activity** - Some activity of encampments

✓ **Site Size** - More than one acre of usable space

⚠ **Year-Round Operability** - Uneven terrain and lack of roadways and paths

Share your thoughts on potential designated encampment sites

Get Involved Thunder Bay

Site F - Simpson



- ✓ **Ability to Provide Basic Services** - Can provide and maintain basic services
- ✓ **Accessibility Considerations** - Reasonably supports accessibility considerations
- ✓ **Compatibility with Current Use** - No regular programmed or permitted uses; cannot be booked for a fee
- ✓ **Distance Guidelines** - Meets all distance guidelines
- ✓ **Distance to Services** - Social services and public transit within 1.5km
- ✓ **Emergency and Service Access** - Flat terrain and roadways support good access
- ✓ **Past Encampment Activity** - Presence of encampments over past years
- ⚠ **Site Size** - Slightly under one acre of usable space at 0.9 acres
- ✓ **Year-Round Operability** - Flat terrain and road access supports all-season operations